

# SXmini PUREMAX 2

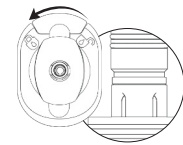


Additional languages at:  
www.yihisxmini.com

User Manual

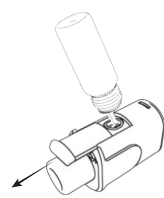
## Filling E-Liquid

1



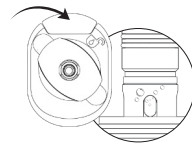
**Liquid-Lock :**  
Rotate the driptip counter-clockwise to block the cotton port.

2



Slide open the filling door, Fill E-Liquid, close the filling door.

3



Rotate clockwise to open cotton port and allow liquid flow before vaping.



### Liquid-Lock (Juice Flow Control)

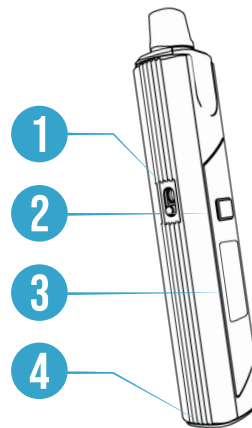
Rotating the driptip locks out any liquid from the cotton, providing a long term leak-proof seal. Lock the driptip in flights or when the device is not in use prolong time for an optimal vaping experience.

Allow 2-3 minutes to saturate before vape - when filling a pod for the first time



**For first-time filling of a new pod, ensure it's filled completely. The cotton expands and creates a seal. This step is only necessary for first fill with a fresh new pod.**

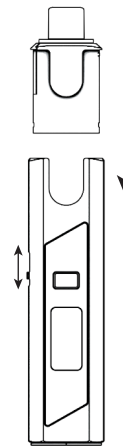
## Reference Diagram



1. Airflow
2. Fire Button
3. Display
4. USB-C Charging Port

## Installation

### Install pod



### Adjust Airflow

## PX PRO 2 Pods - Driptip / Mouth Piece

PX PRO 2 supports changing the 510 driptip (also known as a Mouth Piece).

In the box, you'll find two Reusable mouthpieces:



A wide bore shape, ideal for RDL/DL (Restricted Direct Lung) vaping.

A narrow round shape, best suited for MTL (Mouth-to-Lung) vaping.

Choose what best matches your preferred vaping style. For high ohm coils, we recommend the narrow round shape.



**Please do not dispose of these mouthpieces when using a new pod, as they are reusable.**

You can also swap in your own 510 drip tips. PX PRO2 drip tips feature built-in notches for rotating the liquid lock. If using your own drip tip, use the top handles to manually lock the liquid control.

## Refill Alert

PUREMAX 2 Refill Alert keeps you informed about e-liquid levels:



**Low E-Liquid:** A vibration alerts you to refill soon.

**Empty E-Liquid:** A vibration and a screen message signal the need to refill, with power eventually cut off automatically to protect the coil.



LOW E-LIQUID  
REFILL ALERT



'PURE' MODE  
ANTI DRY

## Operation & Menu

### Lock/Unlock Device

3x Fire Button

### Power Settings

4x Fire Button - Press Fire button to adjust power. Vape or wait to confirm.

### Main Menu

5x Fire Button  
Press Fire button to scroll  
Hold Fire Button to select

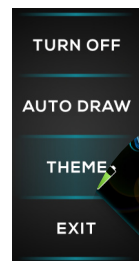
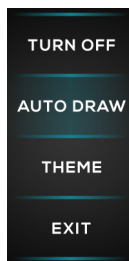
### Puff Counter

Plug a USB-C cable to reset the puff counter.



When in locked state, fire button and power settings are disabled. Auto-draw is still active.

## Main Menu Options



### Choose your preferred activation mode:

Auto Draw: Simply inhale to activate vapor.

Fire Button: Press the button to activate vapor.

Dual Mode: Use both methods interchangeably.

### Themes

Customize your PUREMAX 2 display by selecting a theme for the main page.

Certain themes allow you to upload your own wallpaper for a unique, personalized look.\*

\* Requires SX Link USB dongle (sold separately)

## Custom Wallpaper

### Custom Wallpaper Upload

With PUREMAX 2, personalize your device by uploading up to 4 custom wallpapers.

Use the SX Link USB dongle (sold separately) and the SXi Tools software (Windows) to upload your own images.



Some select stores also offer in-store wallpaper upload services.

Download SXi Tools at:  
www.yihisxmini.com

## PURE Inside

### No Liquid? it will not fire

**PURE** is a temperature control vaping technology that prevents dry hits and overheating, offering a cleaner, safer experience.

**PURE** ensures a consistent taste with every puff.

By modulating temperature in precise curves, **PURE** unlocks a wider range of flavors that evaporate at different points.

**PURE** also extends battery life and coil lifespan by keeping the cotton unscorched for longer.



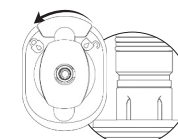
**PURE** runs automatically on PUREMAX 2 - no setup required

## Maintenance

Periodically, condensation may accumulate; use a Q-tip to clean and ensure it stays dry.



Lock the driptip in flights or when the device is not in use for prolong time.



## Specification

- Chipset: YiHi SX304J
- 1300 mAh inner battery
- Wattage: 5-35W
- Output: 1-6V
- Size: 104\*27.47\*19.78mm
- Quiescent current  $\leq 20\mu A$
- Max charge: 5V/2A

### Included In The Box

- 1 x PUREMAX 2 Device
- 1 x User Manual
- 1 x Type-C USB Cable
- 1 x Warranty Card

## Precautions

Opening the device voids the warranty. Avoid high temperatures and damp conditions to prevent damage.

If liquid leaked inside, let the device dry fully before use to avoid damage.

Check the device's authenticity by entering the security code on our official website.

Take care not to damage the USB while charging.

The device warranty period is: 6 months.

We ask vendors to fulfill warranty claims within the warranty period.

If you encounter any issues with a vendor not honoring the warranty, please contact our customer service at: www.yihisxmini.com.

# SXmini

21+

Adult use only

Manufactured by YiHi

Add: Building 1, Yuanxia Road 25, Xiakeng Village, Changping Town, Dongguan City, Guangdong, P.R.China 523575

Executive standard: T/CECC 001-2021

TEL: +86 0769 83918966

FAX: +86 0769 83918966

www.yihisxmini.com

Designed by YiHi in China

Made in China

